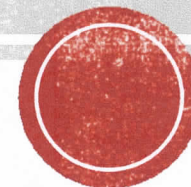
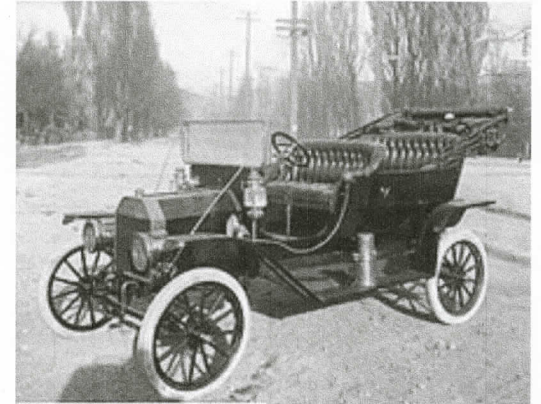


# ORIGINS OF THE LINCOLN HIGHWAY

Lincoln Highway Experience Museum  
Latrobe, PA



# TRANSPORTATION IN THE USA



- \_\_\_\_\_
  - (1903) Model A is produced and sold
  - (1908-1927) Model T is mass produced at an affordable price for working class
- Impacts of assembly line and mass production

▪ \_\_\_\_\_  
“I believe the time has come for the general Government to actively and powerfully co-operate with the States in building a great system of public highways ... that would bring its benefits to every citizen in the country”

– \_\_\_\_\_ (Speaker of the House of Representatives - 1911)

# THE MAN WHO STARTED IT ALL!

- Carl Graham Fisher
  - \_\_\_\_\_
  - Automobile entrepreneur
  - Manufacturer of Prest-O-Lite carbide-gas headlights
  - Investor in construction of the Motor Indianapolis Speedway
  - \_\_\_\_\_
  - Inducted into Automotive Hall of Fame



# LINCOLN HIGHWAY IS BORN

- In 1912, Fisher conceived and helped developed the Lincoln Highway
- Construction began in 1913
- Road spans nearly \_\_\_\_\_ in length
- Road was to be built from \_\_\_\_\_ to \_\_\_\_\_
- Fisher wanted to have the project completed in record time
- Original material of the road was crushed stone

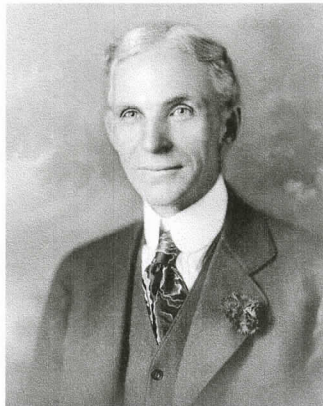




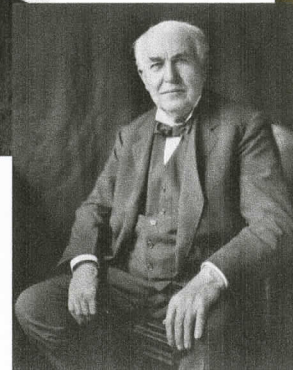
# FINANCING THE HIGHWAY

- Privately funded by numerous automobile \_\_\_\_\_ and \_\_\_\_\_
- Congress was not ready to help finance construction of road at that time

## Opposed Private Funding

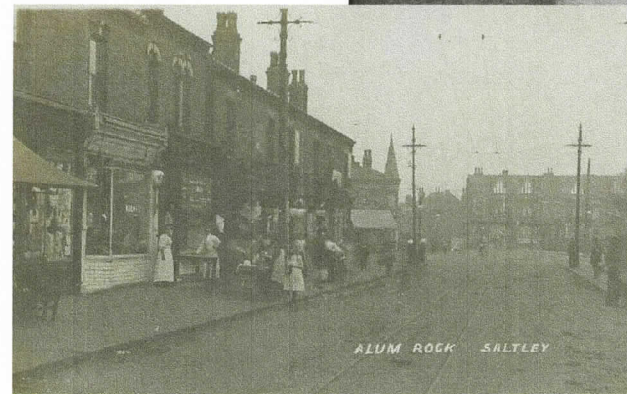


## Provided Funding



# ROADS IN EARLY 1900'S

- Approximately 2.5 million miles of road in USA in 1912
  - Most roads were \_\_\_\_\_ – they were rocky and hard during the dry seasons, and were muddy and sometimes un navigable during raining seasons.
  - Graded, stone, and brick roads only existed near major cities
  - Paved and asphalt roads had yet to be invented
- Today, there are approximately \_\_\_\_\_ miles of **paved** roads.





# COMPLETION OF THE LINCOLN HIGHWAY



# ACTIVITY

- Use your device to complete the following task.
  - You will have 5 minutes to research facts about the Lincoln Highway.
  - Try to find the most interesting and unique facts, locations, sites, etc.
  - List 5 facts on a sheet of paper.
  - We will share and prizes will be given to the most interesting facts found.
  - Any questions?

